

WEDGE SPREADER



Type

CY

Capacity

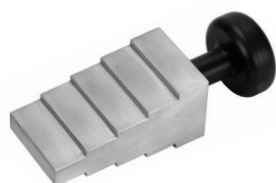
15 ton

Max. pressure

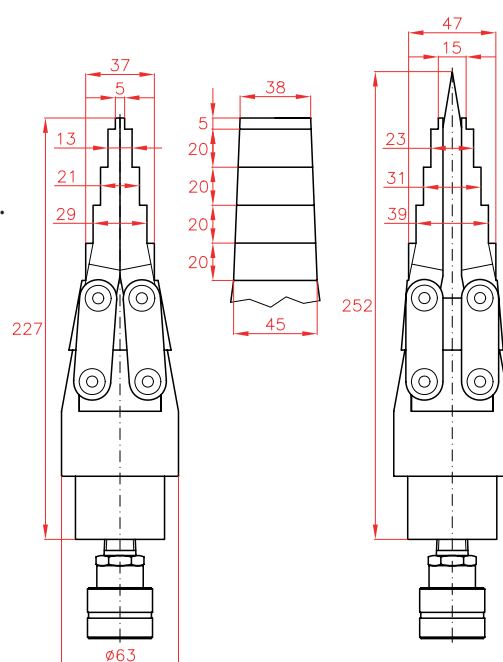
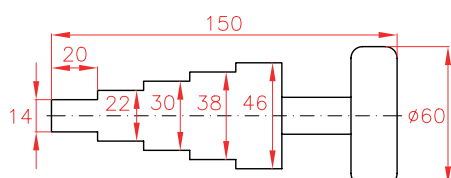
700 bar



- ✓ 15 ton capacity wedge spreader.
- ✓ Lightweight and ergonomic tool. Easy and quick maintenance.
- ✓ Specially designed for pipe and flange repair and maintenance.
Can be used also for seal replacement, removing elbows or heavy equipment maintenance.
- ✓ Required access gap of only 5 mm.
- ✓ Suitable for harsh offshore environment due to corrosion protection.
- ✓ Recommended to be used in pairs.
- ✓ Options: Aluminium Safety block **CY15B**; Handle **CY15H**;
Kit **CY1501S**, with pump and 2 wedge spreaders and accessories.



**Aluminium Safety
Block CY15B
as option.**



Capacity	Model	Oil Capacity	Access Gap	Max. open width	Weight
ton	LARZEP	cm ³	mm	mm	kg
15	CY1501	16	5	47	3,2

SPREAD CYLINDERS

SPREAD CYLINDERS

Type

CY

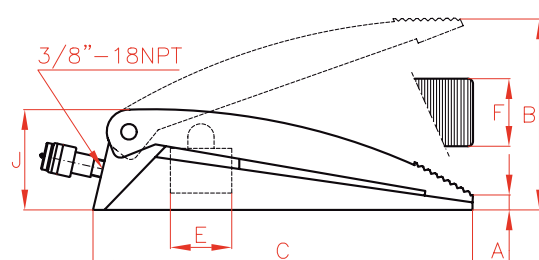
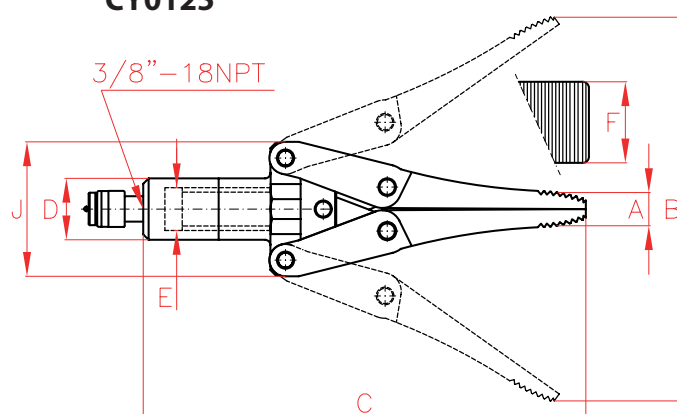
Capacity

0,8 - 1 ton

Max. pressure

700 bar


- ✓ CY series spreaders are used for many tasks in confined access situations.
- ✓ CY0110 is used for very confined situations and CY0125 is used for greater spreading distance.
- ✓ CY0110 and CY0125 models are supplied with AZ3140 high-flow female couplers.

CY0110

CY0125


Capacity		Stroke	Model	Oil Cap.	Area	A	B	C	D	E	F	J	Weight
ton	kN	mm	LARZEP	cm ³	cm ²	mm	mm	mm	mm	mm	mm	mm	kg
1	9	75	CY0110	10	6,5	15	90	168	-	28	55	54	2
0,6	6	255	CY0125	64	14,5	35	290	487	58	42	53	158	11



Always read the safety instructions.