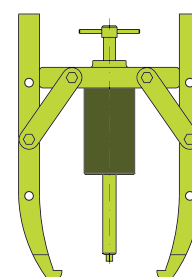


HYDRAULIC PULLERS

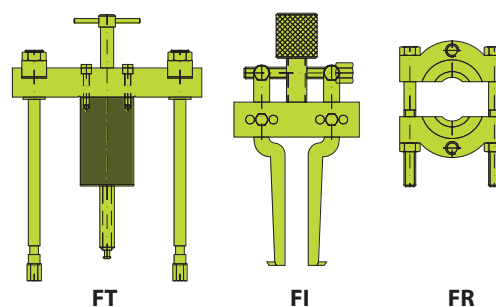


- ✓ Wide range of models from 5 to 50 ton capacity suitable for most maintenance pulling applications.
- ✓ All pullers are delivered in a strong wooden box for ease of transport and storage.
- ✓ Manufactured in high quality forged steel, includes hydraulic and all mechanical components.
- ✓ All pullers are supplied with: cylinder, pump, hose, pressure gauge, gauge adaptor, male coupling and hollow saddle.
- ✓ FU Universal puller includes 2 and 3 jaws, cross bearing, long and short extensions, Bearing and bearing cup pullers.
- ✓ FV Jaw pullers only include 2 and 3 jaws configuration.

FV Jaws puller



FZ Cross bearing pullers





Type

FU - FV

Capacity

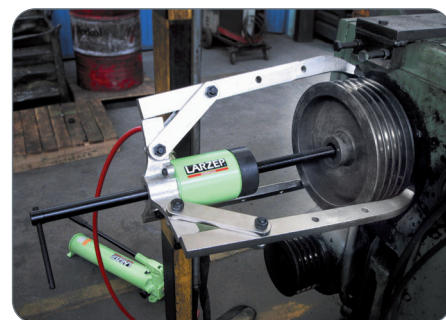
5 - 50 ton

Max. pressure

700 bar**HYDRAULIC PULLER SETS - FU**

(Include hydraulic and mechanic part)

Capacity (ton)	5	10	20	30	50
Model	FU05	FU10	FU20	FU30	FU50
Weight (kg)	20	35	80	145	315
Cylinder	SSM00518	SSH01204P	SSH02205	SSH03006	SSH06008
Pump	W20307	W20307	W10607	W20807	W21907
Hose	AP2015	AP2015	AP2015	AP2015	AP2020
Gauge adaptor	AZ1502	AZ1502	AZ1502	AZ1502	AZ1502
Pressure gauge	AV10007	AV10007	AV10007	AV10007	AV10007
Male half coupling	AZ3120	AZ3120	AZ3120	AZ3120	AZ3120
Hollow saddle	-	AZ0551	AZ0552	AZ0553	AZ0556

**PULLER MECHANICAL PARTS**

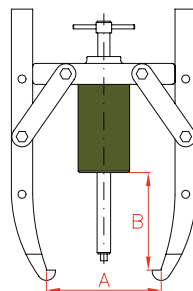
Capacity (ton)	5	10	20	30	50	FV
Model	FU05	FU10	FU20	FU30	FU50	
Jaw	FU0507	FU1007	FU2007	FU3007	FU5007	3
3 Jaws crosshead	-	-	FU2008	FU3008	FU5008	✓
2 Jaws crosshead	-	-	FU2009	FU3009	FU5009	✓
2 and 3 Jaws crosshead	FU0508	FU1008	-	-	-	✓
Arms	FU0510	FU1010	FU2010	FU3010	FU5010	6
Jaws bolts + Nuts	FU0511	FU1011	FU2011	FU3011	FU5011	6
Slinder + Handle	-	FU1012	FU2012	FU3012	FU5012	✓
Short bolts (2)	-	14A0330	14A0074	14A0075	14A0076	✓
Bearing puller	FR1000	FR1000	FR2000	FR3000	FR5000	-
Gross crosshead	FU0517	FU1017	FU2017	FU3017	FU5017	-
Blank nuts (2)	FU1018	FU1018	FU2018	FU3018	FU5018	-
Washer (2)	FU1019	FU1019	FU2019	FU3019	FU5019	-
Slides (2)	FU0520	FU1020	FU2020	FU3020	FU5020	-
Fixing nuts (2)	FU0521	FU1021	FU2021	FU3021	FU5021	-
Large extenders (2)	FU0522	FU1022	FU2022	FU3022	FU5022	-
Short extenders (2)	FU0523	FU1023	FU2023	FU3023	FU5023	-
Bearing cup puller	-	FI1000	FI2000	FI3000	FI5000	-
Point protector	FU0525	FU1025	FU2025	FU3025	FU5025	✓
Connection nuts (2)	14B0050	14B0051	14B0029	14B0030	14B0031	-
Long bolts (2)	-	14A0331	14A0098	14A0099	14A0100	-

✓ Included - Not available

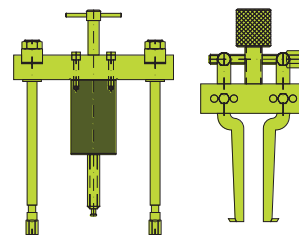
JAWS PULLER FV

Capacity	2 and 3 jaws			
	Model	A max.	B max.	Weight*
ton	LARZEP	mm	mm	kg
5	FV05	240	225	7
10	FV10	350	320	20
20	FV20	480	320	39
30	FV30	680	390	61
50	FV50	980	710	131

*Total weight of all components



FV

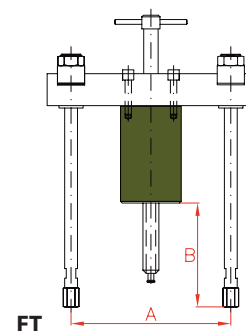


FT

FI

SIMPLE CROSS BEARING PULLER

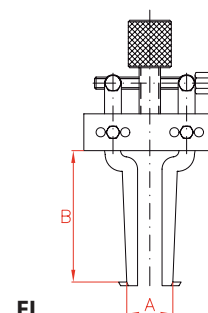
Capacity	A min.	A max.	B max.	Weight
ton	mm	mm	mm	kg
5	40	185	170	7
10	115	260	300	8
20	170	345	265	19
30	185	440	284	37
50	220	580	447	71



FT

BEARING CUP PULLER

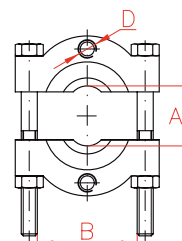
Capacity	A min.	A max.	B	Weight
ton	mm	mm	mm	kg
10	40	145	115	2,2
20	40	145	115	2,4
30	60	240	150	6,0
50	60	240	150	6,4



FI

BEARING PULLER

Capacity	A min.	A max.	B	D
ton	mm	mm	mm	UN
5 - 10	10	110	130	5/8" UNF-18
20	12	134	155	5/8" UNF-18
30	17	250	260	1" UNF-14
50	35	300	300	1 1/4" UNF-12



FR

